



# CHATTERMARKS

The eNewsletter for Woodturners of Western Puget Sound

# Christmas And The Holidays



Enjoy these special  
days with friends  
and family

Dec 2016



Regular  
meeting is  
the 1st  
Wednesday  
of the month  
See Pg 2  
for Dec  
Meeting  
Substitution

Meet & Greet at  
6 PM followed by  
announcements  
at 6:30.

Kitsap  
Adventist  
School  
Gymnasium  
5088 NW  
Taylor Road  
Bremerton.

Other  
activities  
include

Featured  
Demonstration,  
Refreshments,  
Show and Tell,  
Wood Auction,  
Sandpaper &  
Glue sales.

See our  
website at

[OPCAAW.COM](http://OPCAAW.COM)

# Woodturner's Feast

**Y**ou and your family are invited to join The Olympic Peninsula Woodturners to our Annual Holiday Potluck Dinner, Wednesday, December 14th, starting at 6 o'clock, at the Chico Adventist School Gymnasium. There will be plenty of good food, light entertainment, and dozens of prizes given away. For additional details and updates, see our newsletter or club website—OPCAAW.com.

OPCAAW will provide ham and turkey, and club members whose last name begins with **A-F** should bring a Side Dish; **G-L** Fingerfood; **M-R** Salads; **S-Z** Desserts.

Volunteers wishing to lend a hand with preparations please contact Pam Kellington at 815-543-6639.



# Calendar of events, shows, classes and other things

2016

- Dec 14— Holiday (Christmas) Woodturners Feast. This is when you find out why you've been writing your name on the back of those tickets when you check in. Big Raffle give-away. Pot Luck dinner-see page 2.
- Early Jan 2017— Burl delivery at Dave Schweitzer's place in Sheldon. See Ralph Linberg to reserve your burl.
- Jan 2017— Jan demo—under construction. Jamie Straw is seeking input from members via the survey she sent out. Didn't get one? Email her at [jrae4@comcast.net](mailto:jrae4@comcast.net). This is YOUR club. Ask for what you want to see.



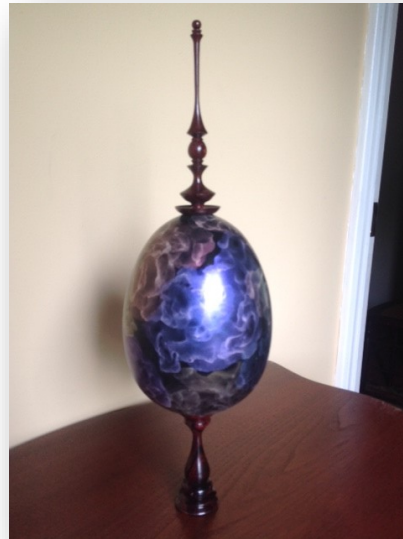
## OPCAAW Annual Elections Brings in Slate of Newbies

### Last meeting's election results—

President—**Larry Lemon**  
 1st VP of Training—**Jamie Straw**  
 2nd VP of Public Relations—**Jim Conway**  
 3rd VP of Membership—**Larry Matkins**  
 Secretary—**Vern West**  
 Treasurer—**Jon Geisbush**  
 Sgt-at-Arms—**George Otterson**



*Unable to photograph the new Board, the masks will be removed in the next newsletter.*



Dan Ackerman calls this piece "Cosmic Clutter". It is 22" tall and consists of a Myrtle wood hollow-form with a finial and base made of Mexican King Wood.

Burl,  
Burl,  
Burl,  
coming to  
you in  
January!

See-  
Ralph  
Linberg

# WOODCRAFT®



A proud sponsor of The Olympic Peninsula  
Woodturners

5963 Corson Avenue South, Seattle 206-767-6394

## Annual Burl sale

Each year Dave Schweitzer coordinates the sale of Maple and Madrone burl hauled in from Oregon. This year it will be earlier—Probably the first part of January. The price has increased a little to \$1.50 per pound.

Talk to **Ralph Lindberg** to reserve your part of the shipment. Remember, if you sign up for burl, you're expected to show up and take delivery of your order.

Dec 2016

Page 3



## CLUB SPONSORS

Many of these sponsors will honor your membership badge with a discount.

**CRAFT SUPPLIES USA**  
THE WOODTURNERS CATALOG

- Low Price Guarantee
- Largest Selection
- Quality Products
- Superb Customer Service
- Fast, Low Cost Shipping
- Family Owned Since 1982

**LOW PRICE GUARANTEE**  
We shop our competitors so you don't have to!  
woodturnerscatalog.com/PriceGuarantee

We constantly compare our prices to other companies to make sure we offer you the best possible price. If you find a lower price elsewhere, we'll match or beat the price!

1-800-551-8876 • woodturnerscatalog.com

[www.edensaw.com](http://www.edensaw.com)  
Port Townsend: 211 Seton Road  
Port Townsend, WA 98368  
(360)-385-7878  
Fax: (360) 385-5215  
Toll-Free: (800) 745-3336

**EDENSAW**  
WOODS, LTD.

Now with a full line of  
Rockler Supplies

TURN TO  
PACKARD  
FOR QUALITY  
TURNING TOOLS  
AND SUPPLIES

**Packard**  
WOODWORKS  
INC.

The Woodturner's Source

[www.packardwoodworks.com](http://www.packardwoodworks.com)  
1-800-683-8876

**D-WAY TOOLS** Simply the finest  
lathe tools available

[www.D-WayTools.com](http://www.D-WayTools.com) DWayTools@htc.com 360/432-9509

Create with Confidence

**ROCKLER**  
WOODWORKING AND HARDWARE

[www.rockler.com](http://www.rockler.com)  
345 Tukwila Parkway  
Tukwila, WA 98188  
206-244-9161



877-672-5275  
[Www.cookwoods.com](http://Www.cookwoods.com)

**The Board Hoarder**

Wood for the woodworker

Steve Bartocci, 206-359-4300 • wopwoody@comcast.net

**CHATTERMARKS**  
is produced by  
and for

The Olympic  
Peninsula  
Chapter of The  
American Association of  
Woodturners -  
**OPCAAW**

and is published  
monthly both  
electronically  
and for printed  
distribution. All  
articles are copyrighted by OP-  
CAAW unless otherwise  
noted. Letters to  
the Editor and  
article submissions are  
welcome.

Jim Conway,  
Editor

# The Mentoring Program

**CONSIDER A MENTOR**—The OPCA AW Mentors are a select group of artisans and professionals who we have designated to promote, encourage, and guide novice and intermediate woodturners within our organization. Mentors provide counsel on subjects like shop setup, equipment purchase, safety, wood preparation and specialized skills. These are some friendly folks willing to give you a point in the right direction.

While not actually a formal training program, meetings with mentors often become just that. In some cases, advanced formal instruction is available at

an hourly rate.

OPCA AW Mentoring is available only to members. Please bring your current badge with you to the first session.

The current Mentors are:

<b>Dan Ackerman</b> (Brinnon)	360-796-4155
<b>Tones Briggs</b> (Port Orchard)	360-271-6448
<b>Bob Hickernell</b> (Bremerton)	360-479-5501
<b>George Kromka</b> (Bremerton)	360-373-1028
<b>Jim Leary</b> (Kingston)	360-297-5872
<b>Jim McFarland</b> (Shelton)	903-352-9807
<b>Brad Stave</b> (Gig Harbor)	206-910-5459

## OPCA AW Officers & Staff

### BOARD OF DIRECTORS

**Larry Lemon**, President

C: 253-278-9058

President@OPCA AW.com

**Jamie Straw**, VP Training & Education

C: 360-551-9233

Training@OPCA AW.com

**Jim Conway**, VP Public Relations

C: 360-531-0168

PublicRelations@OPCA AW.com

**Larry Matkins**, VP Membership

C: 360-551-1044

Membership@OPCA AW.com

**Vern West**, Secretary

H: 360-479-8634

Secretary@OPCA AW.com

**Jon Geisbush**, Treasurer

H: 360-297-1773 C: 360-362-2869

Treasurer@OPCA AW.com

**George Otterson**, Sergeant-at-Arms

C: 206-295-7086

SergeantatArms@OPCA AW.com

To email all Board of Directors at once—

BOD@OPCA AW.com

To email all Staff email at once—

Staff@OPCA AW.com

### STAFF POSITIONS

**Jeff Brody**, Webmaster

360-551-1044

Webmaster@OPCA AW

**Pam Kellington**, Special Events Coordinator

C: 815-543-6639

SpecialEvents@OPCA AW.com

**Jim McFarland**, Librarian

903-352-9807

**Barbara Davis**, Glue & Sandpaper Sales

C: 360-731-2725

**Jeff Childs**, Video Director

C: 360-303-7074

**Jeff Nagley**, Cameraman

360-229-3900

\_\_\_\_\_, Cameraperson

**Stan Stumbo**, Audio

206-842-1458



Show-quality  
figured bowl, pen, and  
spindle blanks  
[nwfiguredwoods.com](http://nwfiguredwoods.com)



