

# Surface, Surface

## With Coloring, Inlays and Finishing Techniques

**T**his month we are pleased to welcome **Graeme Priddle** to the Pacific Northwest. With 20 years experience in woodworking, Graeme is known for his sculptural carvings and turnings that reflect his life and times in his home in Nordland, New Zealand. He has exhibited his works worldwide in places like Japan, Germany, Taiwan, France, Canada and the U.S.



Graeme teaches and demonstrates before many woodworking and turning groups throughout the world.

He says that in the beginning of his turning work, "the emphasis was on using very decorative timber and applying simple form so as not to overshadow the natural beauty of the timber." Now, he says that he spends "more time creating pieces where my design is the dominant factor" and the wood and other materials are "sympathetic with my design."

Born in Lower Hutt, New Zealand in 1960, he moved to Nordland in 1986 and began turning in 1990. He now lives in a 100 acre Bush Block 18 miles Northeast of Whangarei, wherever that is. But then that's why we have Google maps.



June  
2018

Regular  
meeting is  
the last  
Wednesday,  
of the month

Meet & Greet at  
6 PM followed by  
announcements  
at 6:30.

Kitsap  
Adventist  
School  
Gymnasium  
5088 NW  
Taylor Road  
Bremerton.

Other  
activities  
include

Featured  
Demonstration,  
Refreshments,  
Show and Tell,  
Wood Auction,  
Sandpaper &  
Glue sales.

See our  
website at

[OPCAAW.COM](http://OPCAAW.COM)

Greetings All—Summer is Here!

The Portland Symposium was great! I was impressed with number of our club members that attended and also volunteered to help in various ways.

The following note is from **Dale Larson** -

*"I want to thank all the chapters here in the Pacific Northwest/Canada. I appreciate all the work and volunteering that was contributed. The office had planned on around 1100 attending. We had somewhere over 1400 come. The AAW board and staff were very impressed with all the help and smooth operations of the local committees. They are already talking about coming back to the same facility in the future. I hope each of you that attended had a chance to talk to the great turners from abroad and here in the US. And again, thank you.—Dale Larson"*

We ended up with 60 bowls for the empty bowls project. The Tennessee chapter had thrown out the challenge of 100. Not to be out done they brought 200 bowls! The ladies from Meals on Wheels were there and sold the bowls for \$25 each. I put our bowls out on Thursday afternoon and later that afternoon several of them had been sold. Way to go!

The following is a note from **Meals on Wheels to Linda Ferber**.

*"Hi, Linda.....thank you so very much for selecting Meals on Wheels People as a recipient of the Empty Bowls event at your conference in Portland this last weekend. We are still selling bowls, but it looks like the event generated more than \$7,000 for us. Our volunteers had a great time and everyone at the conference was just delightful. Congratulations on a successful event and for helping us change lives one meal at a time.—Julie"*

The Instant gallery was fantastic and pictures are posted on the AAW Facebook page photos section. You may find some of our members work as well as one of our members!

Personally I feel very fortunate to have been able to learn from Guilio Marcolongo from New Zealand, Eli Avisera from Israel, Hans Weissflog from Germany, as well as others from the USA.

The **Kitsap County Fair** is fast approaching. Please sign up for shifts. You can e-mail

Ellen Winne, [Secretary@opcaaw.com](mailto:Secretary@opcaaw.com) or sign up at the next meeting. You do get free admission and parking to the Fair.

There have been question regarding the Club Annual Picnic and Yes we are planning a picnic. Details to be announced shortly.

That's it for now—Larry Lemon



**Strait Turners**—The meeting this month on Tuesday, June 26 at the Gardiner Community Center in Gardiner, WA will focus on impressions of the AAW Symposium from members who attended last week's meeting in Portland.



Thoughts from an Olympic Peninsula Woodturner member—

*"I was hoping to see Jay Shepard's demo on Finishing, Buffing and More, but literally couldn't get in the door. That afternoon, I made sure I was very early to two sessions by Mark Baker on Hollow Forms and Making Lidded Bowls. Baker, from England, was the best demonstrator I saw while I was there."—Jeff Brody*



**James McFarland** has taken down some trees on his property—among them are some cherry trees. He's offering them to anyone who would like to come pick them up. Contact James at 903-352-9807 for directions to his place.





# From the AAW Symposium

CHATTERMARKS



**Lunch break**



**Nice Hat**

## Faces in the crowd



**Jimmie Allen's Booth-  
Cindy Allen, Ellen Winnie,  
Jimmie, Jeff Jackson**



**Jon Giesbush &  
Ray Ewing**

*"Being a member from the Port Angeles area and interacting with club members that I normally don't get to see outside of our monthly meeting was a highlight for me!!!" - Tony Duarte*

*"What stood out to me? - The incredible level of organization for the event, and the quality of the specific venue." - Jamie Straw*



**Brad Powers &  
Peter Gerstel**

*It was really nice to be able to feel and touch [a tool] before buying it. That saved me from wasting my money since there were several brands that I was thinking of buying but after picking them up and holding them I didn't like them. D-Way got my money in the end." - Ray Ewing*

*Something that stood out to me "was the interesting dichotomy between those who are primarily wood turners and those that are primarily wood artists." - Brad Powers*

*"The symposium was amazing! I reconnected with old friends and made more." - Sandy Swayze*

*"Many praises to Jimmie Allen and his well-organized and well managed tool booth." - Jon Giesbush*

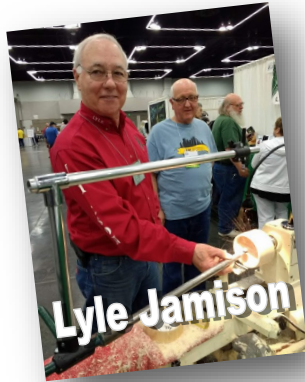
June 2018



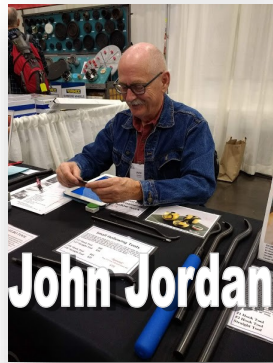
# From the AAW Symposium

## FAMOUS Faces in the crowd

CHATTERMARKS



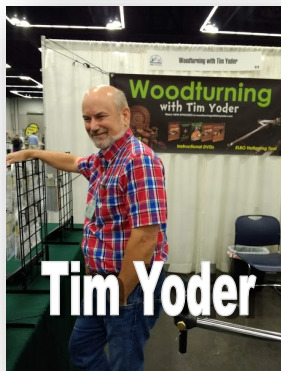
Lyle Jamison



John Jordan



Carl Jacobson



Tim Yoder

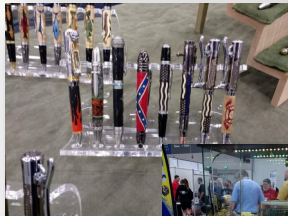


Stuart Beatty  
Demonstrating his  
40/40 Grind and  
proper Faceshield  
use



Jimmy Clewes

## Vendors at AAW



June 2018

Page 4

# Calendar of events, shows, classes and other things

2017

June —27	June Meeting. Graeme Priddle—Coloring, inlays and finishing techniques
August	Kitsap County Fair. We'll have a booth. Make your tops!
August 29—	August Monthly Meeting with a Round Robin multi-station demonstration of different techniques and styles of turning and finishing.
Sept 26—	Rick Rich on creating a four legged stool.
Oct 7—	Sawdust Session—Demonstrators TBA different techniques and styles of turning and finishing.
Oct 31—	Jim Leary on Christmas ornaments
Nov 28—	Bruce Claiborne on "Eggs!" How to hold them, how to turn them.
Dec 11—	Christmas Potluck Dinner



August is the month for the **Kitsap County Fair**, where we will have a booth to display works by our members and live demonstration to dazzle and impress with our turning skills those who walk by.

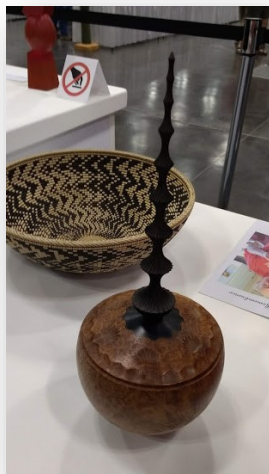
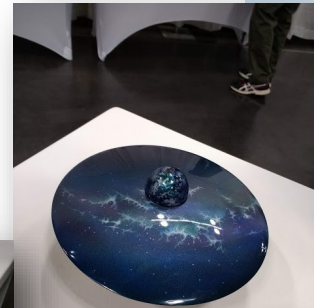
So, here are some things for you to do to help get ready for the Fair—

- **Sign up for a shift or two** at the booth. You'll have fun, meet other members and meet new potential members that want to talk to a wood turner. Contact Ellen Winnie at [secretary@opcaaw.com](mailto:secretary@opcaaw.com) or see her at the meeting.
- Turn some tops. We give them away to kids who play with them while their parents stand and watch us demonstrate how we make those tops.
- Turn a bowl or two that you can display at the booth. Inspire the potential new members. Show them what can be done on a lathe, no matter what you skill level.



# From the AAW Symposium Professional Art

CHATTERMARKS

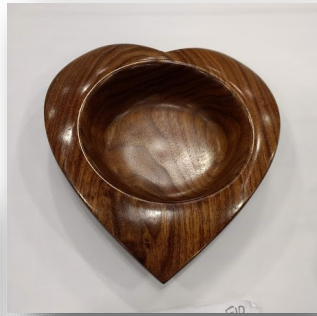
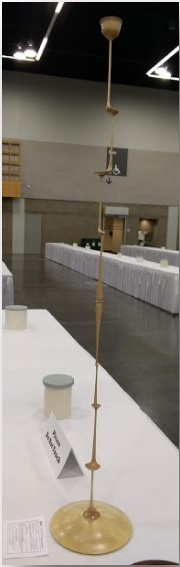


June 2018

Page 6

# Amateur Art

CHATTERMARKS



*I have a hard time believing  
this is **Amateur Art**—Editor*

June 2018

Page 7



## CLUB SPONSORS

Many of these sponsors will honor your membership badge with a discount.

**CRAFT SUPPLIES USA**  
THE WOODTURNERS CATALOG

- Low Price Guarantee
- Largest Selection
- Quality Products
- Superb Customer Service
- Fast, Low Cost Shipping
- Family Owned Since 1982

**LOW PRICE GUARANTEE**  
We shop our competitors so you don't have to!  
woodturnerscatalog.com/PriceGuarantee

We constantly compare our prices to other companies to make sure we offer you the best possible price. If you find a lower price elsewhere, we'll match or beat the price!

1-800-551-8876 • woodturnerscatalog.com

[www.edensaw.com](http://www.edensaw.com)  
Port Townsend: 211 Seton Road  
Port Townsend, WA 98368  
(360)-385-7878  
Fax: (360) 385-5215  
Toll-Free: (800) 745-3336

**EDENSAW**  
WOODS, LTD.

Now with a full line of  
Rockler Supplies

TURN TO  
PACKARD  
FOR QUALITY  
TURNING TOOLS  
AND SUPPLIES

**Packard**  
WOODWORKS  
INC.

The Woodturner's Source

[www.packardwoodworks.com](http://www.packardwoodworks.com)  
1-800-683-8876

**D-WAY TOOLS** Simply the finest  
lathe tools available

[www.D-WayTools.com](http://www.D-WayTools.com) DWayTools@htc.com 360/432-9509

Create with Confidence

**ROCKLER**  
WOODWORKING AND HARDWARE

[www.rockler.com](http://www.rockler.com)  
345 Tukwila Parkway  
Tukwila, WA 98188  
206-244-9161



877-672-5275  
[Www.cookwoods.com](http://Www.cookwoods.com)

**The Board Hoarder**

Wood for the woodworker

Steve Bartocci, 206-359-4300 • wopwoody@comcast.net

## CHATTERMARKS

**CHATTERMARKS**  
is produced by  
and for

The Olympic  
Peninsula Chapter of The American Association  
of Woodturners -  
**OPCAAW**

and is published  
monthly both  
electronically  
and for printed  
distribution. All  
articles are copyrighted by OP-  
CAAW unless otherwise  
noted. Letters to  
the Editor and  
article submissions  
are welcome.

Jim Conway,  
Editor



# The Mentoring Program

**CONSIDER A MENTOR**—The OPCA AW Mentors are a select group of artisans and professionals who we have designated to promote, encourage, and guide novice and intermediate woodturners within our organization. Mentors provide counsel on subjects like shop setup, equipment purchase, safety, wood preparation and specialized skills. These are some friendly folks willing to give you a point in the right direction.

While not actually a formal training program, meetings with mentors often become just that. In some cases, advanced formal instruction is available at

an hourly rate.

OPCA AW Mentoring is available only to members. Please bring your current badge with you to the first session.

The current Mentors are:

<b>Dan Ackerman</b> (Brinnon)	360-796-4155
<b>Tones Briggs</b> (Port Orchard)	360-271-6448
<b>Bob Hickernell</b> (Bremerton)	360-479-5501
<b>George Kromka</b> (Bremerton)	360-373-1028
<b>Jim Leary</b> (Kingston)	360-297-5872
<b>Brad Stave</b> (Gig Harbor)	206-910-5459

## BOARD OF DIRECTORS

**Larry Lemon**, President  
C: 253-278-9058  
President@OPCAAW.com

**Jamie Straw**, VP Training & Education  
C: 360-551-9233  
Training@OPCAAW.com

**Jim Conway**, VP Public Relations  
C: 360-531-0168  
OPCAAW@gmail.com

**Jeff Varady**, VP Membership  
C: 360-698-6529  
Membership@OPCAAW.com

**Ellen Winnie**, Secretary  
H: 360-779-5979  
Minuteman@OPCAAW.com

**Jon Geisbush**, Treasurer  
H: 360-297-1773 C: 360-362-2869  
Treasurer@OPCAAW.com

**Ray Ewing**, Sergeant-at-Arms  
C: 360-813-2820  
SergeantatArms@OPCAAW.com

**Russell Neyman**, Past President  
C: 360-813-4484  
PastPresident@OPCAAW.com

## STAFF POSITIONS

**Jeff Brody**, Webmaster  
360-692-4147 Webmaster@OPCAAW

**Vern West**, Librarian  
H 360-479-8634

**Barbara Davis**, Glue & Sandpaper Sales  
C: 360-731-2725

**Jeff Childs**, Video Director  
C: 360-303-7074

**Jeff Nagley**, Cameraman  
360-229-3900

**Bruce Claiborne**, Cameraman  
206-842-2491

**Chuck Cook**, Cameraman  
C: 360-698-4915

**Stan Stumbo**, Audio  
206-842-1458



A proud sponsor of The Olympic Peninsula  
Woodturners

5963 Corson Avenue South, Seattle 206-767-6394



Show-quality  
figured bowl, pen, and  
spindle blanks  
nwfiguredwoods.com