

Beyond Round - Therming

July
2019

Regular
meeting is
the last
Wednesday,
of the month

Meet & Greet at
6 PM followed by
announcements
at 6:30.

Kitsap
Adventist
School
Gymnasium
5088 NW
Taylor Road
Bremerton.

Other
activities
include

Featured
Demonstration,
Refreshments,
Show and Tell,
Wood Auction,
Sandpaper &
Glue sales.

See our
website at

OPCAAW.COM

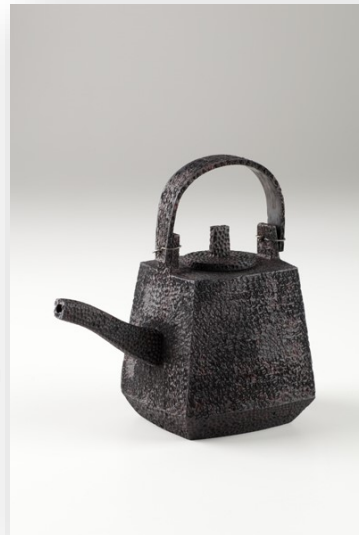


Art Liestman has been making and selling turned objects for about 20 years. He particularly likes making **whimsical** objects and objects that do not appear to be made on the lathe. **Art's** work has been featured in numerous shows



symposia in North America. He regularly demonstrates and teaches for **AAW** chapters across North America and has taught longer courses at schools such as **Arrowmont**, and the **Escoulen School**.

Originally from **Kansas**, **Art** has lived in **Coquitlam, British Columbia** for many years. He is now retired from his career as a university Professor.



and exhibitions, in various magazine articles, and in several books. He has demonstrated at the **AAW Woodturning symposium**, the **Utah Symposium**, the **French national woodturning symposium**, and several regional



Greetings for July!

Well the fireworks are over and we are still here! As this month comes to an end with a great meeting planned for July, August will be upon us which is an active month. There is the **annual club picnic** and then the **Kitsap Fair** followed by our **regular meeting**. Busy times. I really look forward to hosting the Picnic and then working at the Fair.

On another topic have you ever wondered ***what is the difference*** between **Titebond** original vs II or III? Possibly you already know and could enlighten us. I recently stumbled on to an article from Titebond explaining the differences. Some of the things that surprised me is that each glue dries to a different film color, only two of them are food safe for indirect contact, and the basic chemical composition is different in each glue.

Which is best? The answer to that depends on what you are doing. **Indoor** vs **outdoor**, **strength** desired **open time**, **food contact**, **working temperatures**.

The following charts answer some of those questions.

They are part of the information from **TiteBond** at

<http://www.titebond.com/community/the-big-three>

I will miss attending the July meeting. I will be in **Boston MA** at that time. ***I really hope to see all of our members at the picnic on August 10 at my home.***

Larry Lemon — President

Titebond ORIGINAL Good	Titebond PREMIUM Better	Titebond ULTIMATE Best
TYPE Aliphatic Resin	TYPE Cross-linking PVA	TYPE Proprietary Polymer
STRENGTH 3,600 psi	STRENGTH 3,750	STRENGTH 4,000 psi
CHALK TEMPERATURE ≥ 50°F	CHALK TEMPERATURE ≥ 55°F	CHALK TEMPERATURE ≥ 47°F
SHELF LIFE 2 years	SHELF LIFE 2 years	SHELF LIFE 2 years
DRIED FILM Yellow	DRIED FILM Orange	DRIED FILM Light Brown
CLEANUP Water	CLEANUP Water	CLEANUP Water
VOC 10.7 g/L	VOC 3.0 g/L	VOC 9.0 g/L
OPEN/TOTAL ASSEMBLY TIME 4-6/10-15 minutes	OPEN/TOTAL ASSEMBLY TIME 3-5/10-15 minutes	OPEN/TOTAL ASSEMBLY TIME 8-10/20-25 minutes

Titebond ORIGINAL Good	Titebond PREMIUM Better	Titebond ULTIMATE Best
IS YOUR PROJECT FOR INDOOR USE?		
Best Choice ●	Effective Alternative	Effective Alternative
WILL YOUR PROJECT BE EXPOSED TO MOISTURE - EXTERIOR?		
Effective Alternative	Effective Alternative	Best Choice ●
DO YOU WANT MORE "WORKING TIME" TO BOND THE WOOD PIECES TOGETHER?		
Effective Alternative	Effective Alternative	Best Choice ●
WILL YOUR PROJECT HAVE INDIRECT CONTACT WITH FOOD?		
Effective Alternative	Best Choice ●	Best Choice ●
ARE YOU BONDING MATERIALS IN LOWER TEMPERATURES?		
Effective Alternative	Effective Alternative	Best Choice ●

There is no "cheating" in woodturning... just "creativity" and different ways to do things.

Calendar of events, shows, classes and other things

CHATTERMARKS

July 31 — Regular Meeting. Art Lietsman. Demo “Beyond Round: Thermoforming”

August 28 — Regular Meeting. Demo — Mike Mahoney Video Demo

September 25 — Regular Meeting and Sawdust Session with the Board Hoarder; Steve Bartucci will also be onsite selling wood and will be a stop on the sawdust session. This meeting will also feature a tool sale! Stay tuned for news...

October 30 — Regular Meeting. Larry Taylor — Beaded Basket Illusion

November 19—Regular Meeting. Brad Stave “How to hold most everything”

More to follow and you can **keep up to date at our club website [calendar](http://opcaaw.com/my-calendar)**:
<http://opcaaw.com/my-calendar/>

In case you don't have **FaceBook** and wanted to know if our folks who went to **Raleigh** had a good time, see below. Thanks for representing so enthusiastically y'all!



We have “so much opportunity to put a bad finish on our work”

Mike Mahoney

President's Challenges – 2019

July – **Tops for Fair** (always needed! Make some at every opportunity and consider volunteering to work the booth at the Kitsap Fair if you haven't before. It's a lot of fun!)

August – **Collaboration** of 2 or more members (talk about it with a friend (or new friend) at the meeting or picnic!)

September – Long stemmed **Goblet** – Warbler??

October – **Napkin Rings**

November – **Christmas Ornament/ Decoration**

December – **Merry Christmas** – attend Christmas Party – no challenge



July 2019

Page 3

A **nominations committee** has been charged with presenting a slate of candidates to serve as officers and board members of **OPCAAW** next year. If you are interested in becoming an officer or a member of the board at large, please see or contact **Jeff Brody**, who is chair of the committee. The committee's recommendations will be presented to the membership for consideration by **Oct. 1**. Elections for officers and board members generally are held during the **November** meeting. We still have openings for **President** and **Sergeant at Arms** and possibly **Members at Large**.

Wig Stands:

If you missed it at the **June Meeting**, **John Elliot** is putting together an opportunity to make wig stands for folks battling cancer and has the details for how we can all help to make stands with wood donated by **local hardwood companies**. The stands can be decorated by the turner(s) or could be embellished by others like **high school art classes**. Stay tuned for more details from **John**!

Looking to make room in your shop by clearing out that special thing you couldn't do that project without? Do you have something wood turning related for sale that you want our other members to know about? Let us know and we'll see if we can advertise it here in our newsletter. Don't forget to make room for the things you pick up at the **September Tool Swap**!

From the **STRAIT TURNERS**

**Join us for our next meeting
July 30th, 12:00 PM at the
Gardiner Community Center.**

The **Strait Turners** monthly meeting for July will feature demonstrations by **John Elliott** of systems and techniques for "**bowl coring**". We will also have a wood auction. It is a great chance to pick up a unique specimen for that interesting project.

New turners welcome. \$5 door fee for non-members.

*We received a large cache of tools and wood, donated by the **estate** of one of our **former members** who passed. There is far too much to list here and some of the items have sold on Craigslist. Stay tuned as many items may be at **Larry's** house during the picnic in preparation for the tool sale in September. First come, first served! We may put some up on Facebook as well, but don't chance it...come to the picnic (and plan to carpool)!*

***WHEN** you plan to display items at the **Kitsap Fair** (recall the note from last month on **Craft Supply** gift certificate for participants), you can drop them at the picnic on August 10th or get them to any one of the board members and we will ensure they make there. We have a locked display cabinet to reduce the opportunities for mischief, and the booth will be continuously staffed while the Fair is open.*

Signup for Kitsap Fair slots during the meeting! We especially need evenings and weekend slots filled.



"Opportunity is missed by most people because it is dressed in overalls and looks like work."

Thomas Edison

CLUB SPONSORS

Many of these sponsors will honor your current membership badge with a discount.

Look for Penn State Industries to possibly advertise here in the future!



ROBO HIPPIE: WORKING WITH WEAPONS OF MASS DESTRUCTION & OTHER WOOD TURNING TIPS.
541.463.9634

REEDGRAY@COMCAST.NET!



Sumner Woodworker Store

908 Cherry Ave.
Sumner, WA 98390
253-891-9413



www.nilesbottlestoppers.com

**BoxMaster Tools is now officially
a part of D-Way Tools!!**
Click [HERE](#) for more info



BOXMASTER TOOLS

CHATTERMARKS

**"When the
wood is
pretty,
keep it
simple!"**

**Mike
Mahoney**

July 2019

Page 5

CLUB SPONSORS

Many of these sponsors will honor your current membership badge with a discount.

CRAFT SUPPLIES USA
THE WOODTURNERS CATALOG

- Low Price Guarantee
- Largest Selection
- Quality Products
- Superb Customer Service
- Fast, Low Cost Shipping
- Family Owned Since 1982

LOW PRICE GUARANTEE
We shop our competitors so you don't have to!
woodturnerscatalog.com/PriceGuarantee

We constantly compare our prices to other companies to make sure we offer you the best possible price. If you find a lower price elsewhere, we'll match or beat the price!

1-800-551-8876 • woodturnerscatalog.com

www.edensaw.com
Port Townsend: 211 Seton Road
Port Townsend, WA 98368
(360)-385-7878
Fax: (360) 385-5215
Toll-Free: (800) 745-3336

EDENSAW
WOODS, LTD.

Now with a full line of
Rockler Supplies

TURN TO
PACKARD
FOR QUALITY
TURNING TOOLS
AND SUPPLIES

Packard
WOODWORKS
INC.

The Woodturner's Source

www.packardwoodworks.com
1-800-683-8876

D-WAY TOOLS Simply the finest
lathe tools available

www.D-WayTools.com DWayTools@hctc.com 360/432-9509

Create with Confidence

ROCKLER
WOODWORKING AND HARDWARE

www.rockler.com
345 Tukwila Parkway
Tukwila, WA 98188
206-244-9161



877-672-5275
Www.cookwoods.com

The Board Hoarder

Wood for the woodworker

Steve Bartocci, 206-359-4300 • wopwoody@comcast.net

The Mentoring Program

CONSIDER A MENTOR—The OPCA AW **Mentors** are a select group of artisans and professionals who we have designated to promote, encourage, and guide novice and intermediate woodturners within our organization. Mentors provide counsel on subjects like shop setup, equipment purchase, safety, wood preparation and specialized skills. These are some friendly folks willing to give you a point in the right direction.

While not actually a formal training program, meetings with mentors often become just that. In some cases, ad-

vanced formal instruction is available at an hourly rate.

OPCA AW Mentoring is **available only to members**. Please bring your current badge with you to the first session.

The current Mentors are:

George Kromka (Bremerton) 360-373-1028

Jim Leary (Kingston) 360-297-5872

Brad Stave (Gig Harbor) 206-910-5459

Go to this [link](#) on our [website](#) for an updated article on the Mentor Program — what it takes to be a good mentor!

BOARD OF DIRECTORS

Larry Lemon, President

C: 253-278-9058

President@OPCAAW.com

Brad Stave, VP Training & Education

C: 206-910-5459

Training@OPCAAW.com

Rob Parker, VP Public Relations

C: 206-595-6569

PublicRelations@OPCAAW.com

Michael Block, VP Membership

C: 253-632-1125

Membership@OPCAAW.com

Ellen Winnie, Secretary

H: 360-779-5979

Minuteman@OPCAAW.com

Jon Geisbush, Treasurer

H: 360-297-1773 C: 360-362-2869

Treasurer@OPCAAW.com

Ray Ewing, Sergeant-at-Arms

C: 360-813-2820

SergeantatArms@OPCAAW.com

Jeff Brody, Board Member at Large

360-692-4147 Webmaster@OPCAAW.com

Russell Neyman, Past President

C: 360-813-4484

PastPresident@OPCAAW.com

STAFF POSITIONS

Jeff Brody, Webmaster

360-692-4147 Webmaster@OPCAAW.com

Vern West, Librarian

H 360-479-8634

Barbara Davis, Glue & Sandpaper Sales

C: 360-731-2725

Jeff Childs, Video Director

C: 360-303-7074

Jeff Nagley, Cameraman

360-229-3900

Bruce Claiborne, Cameraman

206-842-2491

Chuck Cook, Cameraman

C: 360-698-4915

Stan Stumbo, Audio

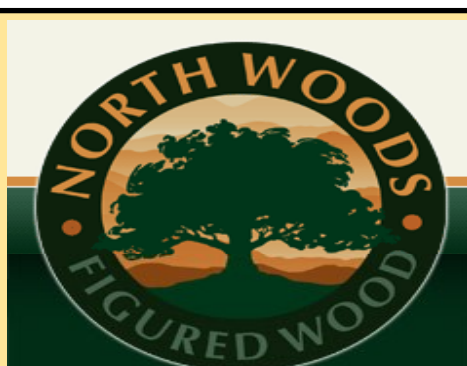
206-842-1458

Ray Ewing, Facebook Modertaor



A proud sponsor of The Olympic Peninsula
Woodturners

5963 Corson Avenue South, Seattle 206-767-6394



Show-quality
figured bowl, pen, and
spindle blanks

nwfiguredwoods.com

CHATTERMARKS is produced by and for

The Olympic Peninsula Chapter of The American Association of Woodturners - OPCA AW

and is published monthly both electronically and for printed distribution. All articles are copyrighted by OPCA AW unless otherwise noted. Letters to the Editor and article submissions are welcome.

Rob Parker, Editor