

Enhancements~The Next Step

You may have reached the point where you are wanting to take your turning another step beyond where you are today. Or you may have a particular piece that doesn't stand out in any way and you want to make it more appealing. Or you may just want to do something wild and crazy.

Enhancements may be your answer.

Molly Winton has been with us before showing us how she has used pyrography to enhance her miniatures and other turnings. This month, Molly joins us again to talk more about enhancements,

but from a general point of view.

Rather than talking about specific enhancement types like burning, carving, branding, coloring, etc, she will be taking a more general approach. What do you look for to decide when to include a design element which will take you beyond the form and beauty of the individual wood. Elements like overall form of the vessel, rim design, foot design, fluidity of form and other such ide-

as that enter into your analysis will be discussed and clarified.

Join us at this month's meeting and take your ideas to another level.



Oct 2017

Regular
meeting is
the last
Wednesday,
of the month

Meet & Greet at
6 PM followed by
announcements
at 6:30.

Kitsap
Adventist
School
Gymnasium
5088 NW
Taylor Road
Bremerton.

Other
activities
include

Featured
Demonstration,
Refreshments,
Show and Tell,
Wood Auction,
Sandpaper &
Glue sales.

See our
website at

OPCAAW.COM

At the September meeting we were treated with a Christmas ornament demonstration by David Lutrick and then the following Sunday the club hosted a sawdust session with many different presenters and subjects. Both were very inspiring and informative meetings. The great thing about this club is that the future holds more great meetings.

This month, October, is the last President's challenge of the year. The Topic - Christmas ornaments of your choosing. I am really looking forward to seeing your work at the upcoming meeting.

Remember, all those that have participated in the Presidents Challenge will be put into a special drawing for prizes at **the Christmas Party**. There will also be our traditional drawing for many door prizes and gifts. Please plan on attending the party on **December 12th** (note: the day is a Tuesday evening since the school is not available on Wednesday.)

I really appreciate the people that have offered to help and signed up on the volunteer list at the last meeting. The more people working on setting up and cleaning up make it go quicker more enjoyable for all.

I am looking forward to seeing you at the next Meeting, Wednesday night, October 25th.

Happy Halloween
Larry Lemon, President



FaceBook—Where to go next

Got a new piece that just came off your lathe? Wanna show it off a little? Go to the club's FaceBook page and see what some of the others are doing.



Patrick Miller and **Jeff Varady** just posted their latest works. Both are new to turning, so you can't use that excuse for not posting on FB.

Patrick just finished a one on one class with Russell Neyman and turned an excellent bowl that he gave to his daughter.



Jeff Varady went to the club's Sawdust Session, picked up a few ideas and turned a really nice walnut lidded box.



Life's Lessons— A Testimonial

A last minute update to a known turning demonstrator begged to be included in the newsletter this month.

Earlier this month, **Molly Winton** moved to Oak Harbor on the gorgeous Whidbey Island. She has a new detached workshop where she will be able to turn occasionally for personal pleasure, but not for commercial sales.

Earlier in 2017 Molly suspended her woodturning and embellishment classes and her production turning. She continues to teach at club demonstrations and symposia where she can control her environment.

However, Molly has found that her exposure to the smoke and wood dust associated with her pyrography and turning has left her with adverse health issues and is forcing her to essentially quit wood turning. Her new shop is more heavily dedicated to dust and smoke removal, a topic that appears on these columns occasionally.

I look around my shop at the ubiquitous layer of dust that covers everything and begin to rethink my dedication to **my health and my shop's air quality**. In an environment where I have control of the conditions, I would be stupid to ignore the warnings of others and not take steps to clean the air I breathe as best I can.

Dust masks, respirators, fans, dust control systems are all parts of the over-all clean-as-you-can-get-it air quality systems you should employ in your shop. Yes, they are an inconvenience, but they can go a long way to giving you years of healthy and happy turning.



A Running Start for 2018

Want to get a jump on next year? Your Membership VP is now accepting dues payments for 2018.

Cash, check or Credit Card—use any you prefer to make your dues payment.

Individual membership is still \$30 PER YEAR! And family membership is \$50. Dues are only pro-rated for new members. If you are a returning member, the cost will be the same now or a year from now, so take advantage of this year-end offer. One whole year's membership for the price of \$30. Get them now while the supply lasts. Shipping and handling included.

Elections Be Coming

November is the month our By-laws say is for elections. A slate of candidates will be presented—maybe at the October meeting—giving you plenty of time to consider the merits of those candidates.

Ready to lend a hand? Some positions on the board need to be filled with **one of you**—willing to share your talents and give back to the club that gives you essential tools for your craft.

And Speaking of Elections—

We still need someone with good Excel skills to be the **Membership VP**. The Excel part is because that's the system that we use for our membership list.

Duties are not huge. Check everyone in to the meeting and maintain the membership list

The other open slot that needs to be filled is what we have called the Sgt-at-Arms. In reality, the job description is more **facilities manager**. The person who makes sure that our many volunteers set up the room for the monthly meeting and then closes up at the end of the evening.

It's time to step up to the plate, people.



Calendar of events, shows, classes and other things

CHATTERMARKS

2017

| | |
|---------|---|
| Oct 25— | Monthly Meeting—Molly Winton on embellishment design |
| Nov 29— | Monthly Meeting—Capt Jack Wayne from Seattle's Woodcraft—Platters with embellishment. Election of Board of Directors for 2018 |
| Dec 12— | TUESDAY Christmas dinner and club party—Event is on a non-Wednesday due to scheduling conflicts with the school. No meeting on the last Wednesday of the month due to Christmas Holidays. |
| Jan 31 | Monthly Meeting—Demonstrator TBA |



Mark Your Calendars!—

The Club Christmas Party and Dinner will be on a **TUESDAY**—December 12, 2017.

Where—Same place as the meetings.

Lots of fun, food and prizes to give away.

See flyer in the newsletter.

AAW News

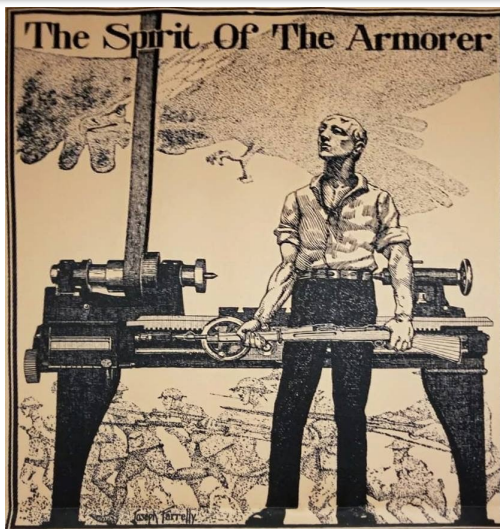
Looking for an Adventurist

AAW is looking for a production turner with a sense of adventure to help local artisans in Honduras get a mallet-making project running in top gear!

For the past two years, the AAW has helped a nonprofit, known as [GreenWood](#), teach woodturning to the people of a small community in Honduras. The aim was to help them learn how to produce hardwood mallets for sale in North America. Now, the Hondurans are ready to begin full-scale production. GreenWood has asked for the AAW's help again to make sure the project will proceed professionally and efficiently.

We would like to find a production turner who can pay his or her own way to Honduras for 7 to 10 days of training. GreenWood will provide transportation, meals, and lodging in Honduras. Some knowledge of Spanish will help, but isn't essential. The trip to Honduras will probably take place this November or December but may also be scheduled early in 2018.

If you're interested, please email Phil McDonald at phil@woodturner.org



This photo was submitted by a member which he found on the FB page of Woodturners from around the Globe.

Remember, you can help!

Maria flattened Puerto Rico and went out to sea, missing the U.S. coast. Harvey and Irma flooded large parts of Texas and Florida, and displaced thousands of people.

This has been an especially brutal hurricane season for those on the Gulf Coast and Caribbean.

Please consider donating to their relief. We have no idea how bad it is there, but we can help.

Popular and secure donation sites are with the [Red Cross](#) and the [Salvation Army](#).

If you are an Amazon Prime member, there is a way to sign up on Smile.Amazon.com and have a portion of your purchases go towards a charity.

Remembering the Beginnings

By Ron Brown – Feb 14, 2017

The longer we turn at the wood lathe the more the process becomes second nature. The results take less effort and are less amazing because we've seen it all before. Fortunately for me, this time of year (when I'm on tour) I get to see about 5,000 people every week and many of them have never turned anything or even watched someone make a turned item in person.

The look on their faces and in their wide open eyes when I apply the various texturing patterns to a lump of wood tells me that they are amazed and many of them say just that. When my friend, Bradley McCalister, turns a bowl from green wood and throws shavings 10 feet right at the audience, you can hear the crowd gasp and giggle. Another long-time friend, Alex Snodgrass, who is a master on the band saw, makes a complete reindeer in under a minute. He never fails to amaze folks who are seeing it for the first time.

When you demonstrate anything on a lathe, **don't take it for granted** because what we do is anything but routine. You have developed skills and abilities which are nothing short of magic to someone who hasn't seen it before. Some folks can't imagine how anyone can be that amazing and produce something so beautiful from a simple lump of firewood.

My counsel for you is to fan the flames of wonder, not by putting beginners down or acting superior, but by encouraging the person that they can learn to do it also. Help them to grasp the concepts and let them know that with a little practice, time and patience, they too can begin to produce beautiful treasures themselves. We all have to start somewhere and you were once a beginner too.

From turning a bowl to making a delicate Christmas Ornament Finial to a simple spinning top or pen, each of these are wonderful miracles to some-

one who has not seen it done before. Share the excitement whenever you can and pass the joy along because wherever you go, there you are.

—Ron Brown is a professional wood turner and inventor. Besides his website at RonBrownsBest.com, he writes a newsletter with nuggets of wisdom as it applies to wood turning.



Got Wood??

Do you have wood stored in your shop that you may never get around to? Is it time to take that special piece to a meeting and donate it to the club?

If it's extra-special-good, maybe it could go on the silent auction table and bring an even higher premium for our coffers (bank account).



Keeping up with neighbors

The club tries to maintain an up-to-date membership list, but sometimes we need a little help from you.

Please let our Membership VP know if anyone that has been a past member has died recently. It saves on embarrassing moments if we want to contact that person.

Know anyone that is sick, or not doing well? Let one of the Board members know so that we can respond appropriately.

Light Work with Many Hands

The club needs volunteers to help.

Come early (5:00pm) to help with the set up for a meeting.

Stay late to help clean up. It only takes a few minutes.

Call Cindy Allen and help her with the Christmas Dinner and Party.

360-373-3041



Remove chuck keys, adjusting wrenches, and knockout bars.

Form a habit of checking for these before turning on the lathe.

Unless you like the excitement of the adrenaline rush you get when a missile sails by your head to become embedded in the wall.

Christmas Feast

You, as a paid member, and your family are invited to join The Olympic Peninsula Woodturners at our Annual Christmas Potluck Dinner, Tuesday, December 12th, 2017, starting at 6 pm, at the Kitsap Adventist School Gymnasium. There will be plenty of good food, interesting conversation, and dozens of prizes given away. For additional details and updates, see our newsletter or club website—OPCAAW.com.

OPCAAW will provide ham and turkey, and club members whose last name begins with **A-I** should bring a Dessert; **J-Q** Side Dish; **R-Z** Salads. If you have a “specialty dish” that you would prefer to bring, the choice is yours.

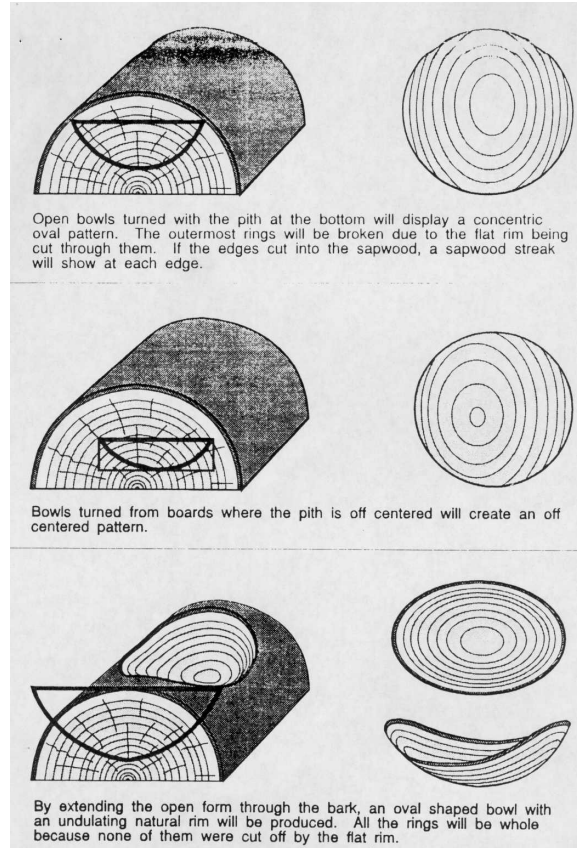
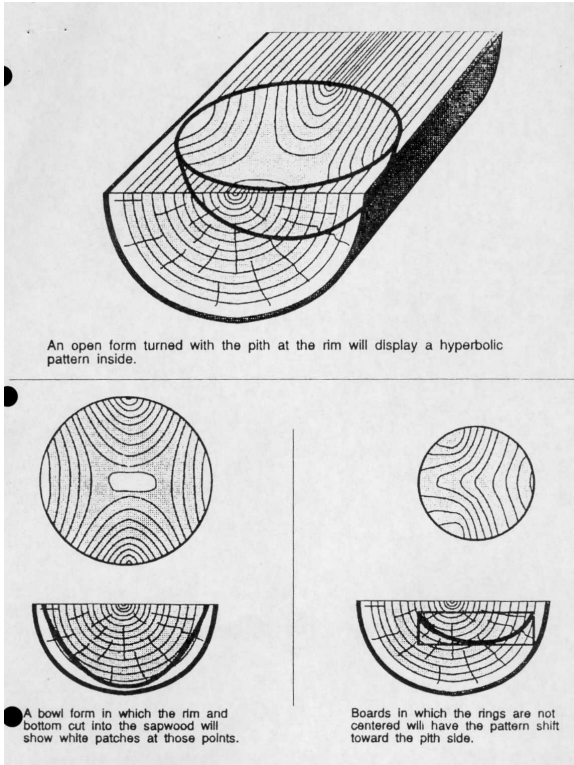
Volunteers wishing to lend a hand with preparations please contact Cindy Allen at 360-373-3041.



Planning your Bowl

See the photos and captions below to get a sense of what your finished bowl will look like depending upon how you orient it to the half-log that you start with.

For more information go [Here](#).



The piece below on Jam Chucks is from the AAW newsletter. If you are an AAW member you have access to this and many more articles with each issue.

Better Success with Jam-Chucking

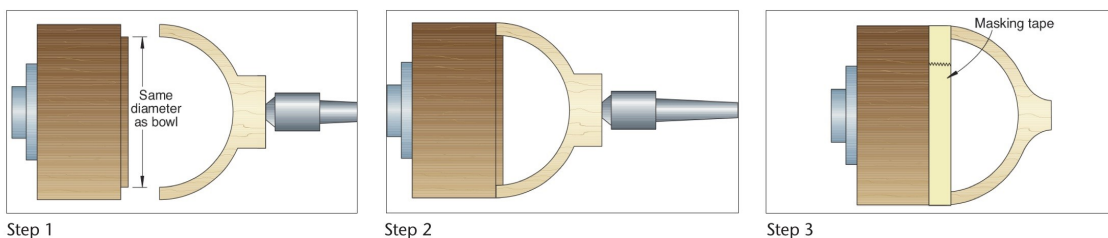
I've helped a few woodworkers who have had problems when turning with a jam chuck. This three-step process might help you be more successful.

Step 1: Turn a jam chuck with a small tenon that fits inside the bowl. Turn the outside diameter of the jam chuck so the diameter matches the outside diameter of the bowl.

Step 2: Fit the bowl over the tenon and apply pressure with the tailstock. For added security and antislip protection, wrap the joint between the bowl and jam chuck with masking tape.

Step 3: With the foot turned, leave the masking tape in place but back off the tailstock. Slow the lathe speed and turn away the nub. When removing the nub, use light cuts that apply pressure toward the center of the form and toward the headstock. Then sand the bottom.

~ Chris Wright



CLUB SPONSORS

Many of these sponsors will honor your membership badge with a discount.

CRAFT SUPPLIES USA
THE WOODTURNERS CATALOG

- Low Price Guarantee
- Largest Selection
- Quality Products
- Superb Customer Service
- Fast, Low Cost Shipping
- Family Owned Since 1982

LOW PRICE GUARANTEE
We shop our competitors so you don't have to!
woodturnerscatalog.com/PriceGuarantee

We constantly compare our prices to other companies to make sure we offer you the best possible price. If you find a lower price elsewhere, we'll match or beat the price!

1-800-551-8876 • woodturnerscatalog.com

www.edensaw.com
Port Townsend: 211 Seton Road
Port Townsend, WA 98368
(360)-385-7878
Fax: (360) 385-5215
Toll-Free: (800) 745-3336

EDENSAW
WOODS, LTD.

Now with a full line of
Rockler Supplies

TURN TO
PACKARD
FOR QUALITY
TURNING TOOLS
AND SUPPLIES

Packard
WOODWORKS
INC.

The Woodturner's Source

www.packardwoodworks.com
1-800-683-8876

D-WAY TOOLS Simply the finest
lathe tools available

www.D-WayTools.com DWayTools@htc.com 360/432-9509

Create with Confidence

ROCKLER
WOODWORKING AND HARDWARE

www.rockler.com
345 Tukwila Parkway
Tukwila, WA 98188
206-244-9161



877-672-5275
Www.cookwoods.com

The Board Hoarder

Wood for the woodworker

Steve Bartocci, 206-359-4300 • wopwoody@comcast.net

CHATTERMARKS

CHATTERMARKS
is produced by
and for

The Olympic
Peninsula Chapter of The American Association
of Woodturners -
OPCAAW

and is published
monthly both
electronically
and for printed
distribution. All
articles are copyrighted by OP-
CAAW unless otherwise
noted. Letters to
the Editor and
article submissions
are welcome.

Jim Conway,
Editor

The Mentoring Program

CONSIDER A MENTOR—The OPCAOW Mentors are a select group of artisans and professionals who we have designated to promote, encourage, and guide novice and intermediate woodturners within our organization. Mentors provide counsel on subjects like shop setup, equipment purchase, safety, wood preparation and specialized skills. These are some friendly folks willing to give you a point in the right direction.

While not actually a formal training program, meetings with mentors often become just that. In some cases, advanced formal instruction is available at

an hourly rate.

OPCAOW Mentoring is available only to members. Please bring your current badge with you to the first session.

The current Mentors are:

| | |
|------------------------------------|--------------|
| Dan Ackerman (Brinnon) | 360-796-4155 |
| Tones Briggs (Port Orchard) | 360-271-6448 |
| Bob Hickernell (Bremerton) | 360-479-5501 |
| George Kromka (Bremerton) | 360-373-1028 |
| Jim Leary (Kingston) | 360-297-5872 |
| Jim McFarland (Shelton) | 903-352-9807 |
| Brad Stave (Gig Harbor) | 206-910-5459 |

BOARD OF DIRECTORS

Larry Lemon, President

C: 253-278-9058

President@OPCAOW.com

Jamie Straw, VP Training & Education

C: 360-551-9233

Training@OPCAOW.com

Jim Conway, VP Public Relations

C: 360-531-0168

OPCAOW@gmail.com

Larry Matkins, VP Membership

C: 360-551-1044

Membership@OPCAOW.com

Vern West, Secretary

H: 360-479-8634

Secretary@OPCAOW.com

Jon Geisbush, Treasurer

H: 360-297-1773 C: 360-362-2869

Treasurer@OPCAOW.com

Sergeant-at-Arms Currently open position.

C:

SergeantatArms@OPCAOW.com

Russell Neyman, Past President

C: 360-813-4484

PastPresident@OPCAOW.com

STAFF POSITIONS

Jeff Brody, Webmaster

360-692-4147 Webmaster@OPCAOW

Jim McFarland, Librarian

903-352-9807

Barbara Davis, Glue & Sandpaper Sales

C: 360-731-2725

Jeff Childs, Video Director

C: 360-303-7074

Jeff Nagley, Cameraman

360-229-3900

Ray Ewing, Cameraman

360-551-9233

Stan Stumbo, Audio

206-842-1458

Bruce Claiborne, Cameraman

206-842-2491

Chuck Cook, Cameraman

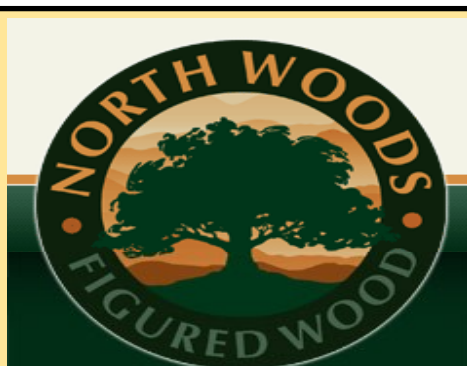
360-698-4915



A proud sponsor of The Olympic Peninsula

Woodturners

5963 Corson Avenue South, Seattle 206-767-6394



Show-quality
figured bowl, pen, and
spindle blanks
nwfiguredwoods.com